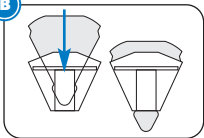




E-FOAM ROTARY HD INSTRUCTIONS FOR USE:

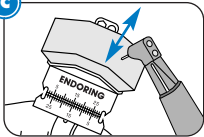
B



A Always use new files or previously used instruments cleaned with ultra sonic cleaning prior to placing them into a new piece of e-Foam Rotary HD insert for steam autoclave processing. Files can be placed directly into a new single use e-Foam insert and then placed into a standard pack for steam autoclave processing. Avoid placing heavy objects onto the autoclave pack to avoid deforming the foam.

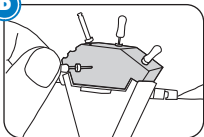
B Place the e-Foam Rotary HD insert into the Endoring cup. Pull the e-Foam insert out the bottom of the cup to seat the e-Foam insert securely in place and assure best clinical and cleaning performance of the e-Foam.

C



C To clean rotary files, pass the rotating files vertically into the e-Foam Rotary HD insert at normal operating speeds of 3-400 RPM. Do not exceed 800 RPM. Rotary files clean best when inserted into the top of the e-Foam insert or into the docking area found on the back of the Endoring II. Rotary file flutes normally clean with one short pass into the e-Foam insert. For best results avoid any excessive up and down file movement and/or placing the rotating files into the e-Foam insert at steep off vertical angles. Hand files can be vertically passed into the e-Foam insert 1-3 times to remove any debris.

D



D The top of the e-Foam insert has 3 distinct faceted areas to aide in instrument organization. During treatment, store instruments in the e-Foam insert by arranging hand files, rotary files or other instruments directly into the top of the e-Foam insert. Assistants can use the docking area on the back of the Endoring II to safely accept, transfer and store files.

E Dispose of the e-Foam Rotary HD insert after one use.

PROCESSING INSTRUCTIONS:

2

Steam autoclave only prior to use. **DO NOT REUSE FOAM INSERT.** Autoclaving **will not** remove bioburden left behind from prior usage. Do not exceed temperature of **275°F (135°C)**. **Warning:** Do not place any components into Surgical Milk or instrument dips prior to autoclaving.