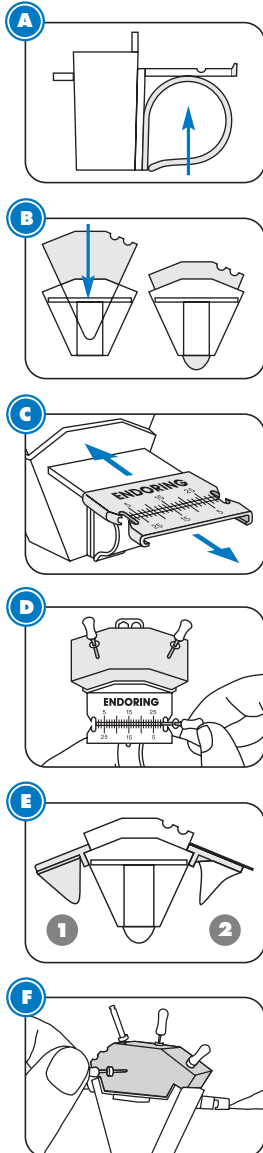




ENGLISH

ENDORING INSTRUCTIONS FOR USE:



- A** Before assembly, choose one of three available ring sizes (large, small and petit) that best fits your index finger. Slide the selected ring into the cup channel located beneath the scale.
- B** Place the Endoring foam insert into the Endoring cup. Pull the foam insert out the bottom of the cup to seat the foam.
- C** Prior to first use, autoclave the Endoring with the metal ruler attached to the holder cup. After the first autoclaving, the metal ruler will easily slide on and off the Endoring. For subsequent autoclaving, **always** remove the metal ruler from the holder cup.
- D** Arrange hand files, rotary files or other instruments such as Gates Gliddens into the foam insert. Remove all file bioburden prior to autoclaving files in the foam insert. When using rubber stops, utilize the stop locks on either the built-in ruler or the detachable metal ruler to increase or decrease the instrument's working length. The rulers perform well with paper points, gutta percha and many other endodontic instruments. To efficiently clean instruments simply pass them in and out of the foam insert. You can also clean instruments by sliding them through the corrugated area on top of the foam insert. Rubber stops can be safely added to instruments using the ports located on the back of the Endoring cup.

WARNING: Do not place metal ruler in ultrasonic cleaners. The finish can be damaged by the ultrasonic cleaning solutions.

- E** Gelwell attachments can be placed onto the Endoring cup to hold Jordco's **EndoGel™** or other lubricating gels and liquids. Use either the reusable 2.0ml cup (1) or the single-use clear .65ml cups (2) inserted into the attachment ring. The cups can be reversibly attached to either side of the Endoring.
- F** The back of the Endoring features the new **Endo Docking Station™**. When held by an assistant, a doctor, operating under a surgical microscope, can safely pass files into the expanded area of foam. The area is also ideal for storing used files.

PROCESSING INSTRUCTIONS:

	ULTRASONIC PRE CLEAN	STEAM AUTOCLAVE	CHEMI-CLAVE	ETHYLENE OXIDE	DRY HEAT	"COLD STERILE"
Holder Cup	YES	YES	YES	YES	NO	YES
Gelwell Cup	YES	YES	YES	YES	NO	YES
Gelwell Holder Ring	YES	YES	YES	YES	NO	YES
Metal Ruler	NO	YES <small>(May damage finish)</small>	YES	YES	YES	NO
Gelwell Cups	NO	NO	NO	NO	NO	NO <small>(May damage finish)</small>
Foam Inserts		Steam autoclave only prior to use. DO NOT REUSE FOAM INSERT. Autoclaving will not remove bioburden left behind from prior usage.				
		Warning: Do not place any components into Surgical Milk or instrument dips prior to autoclaving.				



Jordco, Incorporated
 595 NW 167th Avenue, Beaverton, OR 97006 USA
 800/752-2812 (within USA), 503/531-3904 (outside USA)
 503/531-3757 FAX
 www.jordco.com

Authorized Representative in the EU
 AR-MED Ltd.
 Runnymede Malthouse
 Egham TW20 9BD
 United Kingdom